

**RemoteApp Express**  
For Remote Desktop Services  
Version 1.5.0

Copyright by MQ Technologies 2019. All right reserved  
[contact@mqtechnologies.com](mailto:contact@mqtechnologies.com)

**This program is provided "AS-IS", without any kind of warranty. MQ Technologies does not guarantee that the program will operate correctly, neither uninterrupted nor error-free in combination with other programs, which user may select for use. MQ Technologies disclaims all responsibilities or all liabilities, whether they are implicit or explicit, that might arise from using of this program.**

**By using this program you agree to indemnify the author from any liability that might arise from its use.**

## Table of Contents

---

I - INTRODUCTION.....	3
II - INSTALLATION.....	3
1 - SERVER-SIDE: (Server folder) .....	3
2 - CLIENT-SIDE: (Client folder).....	3
III - USING .....	3

---

## I - INTRODUCTION

---

**RemoteApp Express** is a complementary utility program for **Remote Desktop Services**. This program provides the ability, on the local machine, a quicker way to open any document file (Word, Excel, PDF, etc) with the default associated program on the RDSH server (Terminal Server) via a generic published **RemoteApp**.

## II - INSTALLATION

---

This program works only for **Remote Desktop Services**. You must be familiar with setting up and publishing **RemoteApp** procedures.

This version works only with Windows 2012R2 and previous versions on the server side.

**Requirement:** drive mapping must be enabled. File on local machine must be accessible following the standard mapped name. e.g.:

"c:\my documents\myfile.docx" on the local machine will be transformed to "\\tsclient\c\my documents\myfile.docx" on the local machine before sending to the server side.

File on a network drive (e.g: "x:\myfile.docx") will not be transformed before sending to the server. By default, it will be transformed when arriving on the server.

### 1 - SERVER-SIDE: (Server folder)

---

Execute the installation file **RemoteAppExpressS.msi**, it will install a **RemoteAppExpressS.exe** program. You need to publish this program as **RemoteApp**. The RDP file of this published application need to distribute on the client machine.

After the installation, by default, this program allows only text (.txt) and PDF (.pdf) file types to be opened on the server. More file types can be added by modifying this registry key on the server:

HKEY\_LOCAL\_MACHINE\SOFTWARE\MQTechnologies\RemoteAppExpress\AllowedFileType

Add file extension to the allowedlist, each extension must be preceded with a point and separated with a semi-colon (;). E.g.: ".txt;.pdf;.doc;.docx;.xls;.xlsx"

### 2 - CLIENT-SIDE: (Client folder)

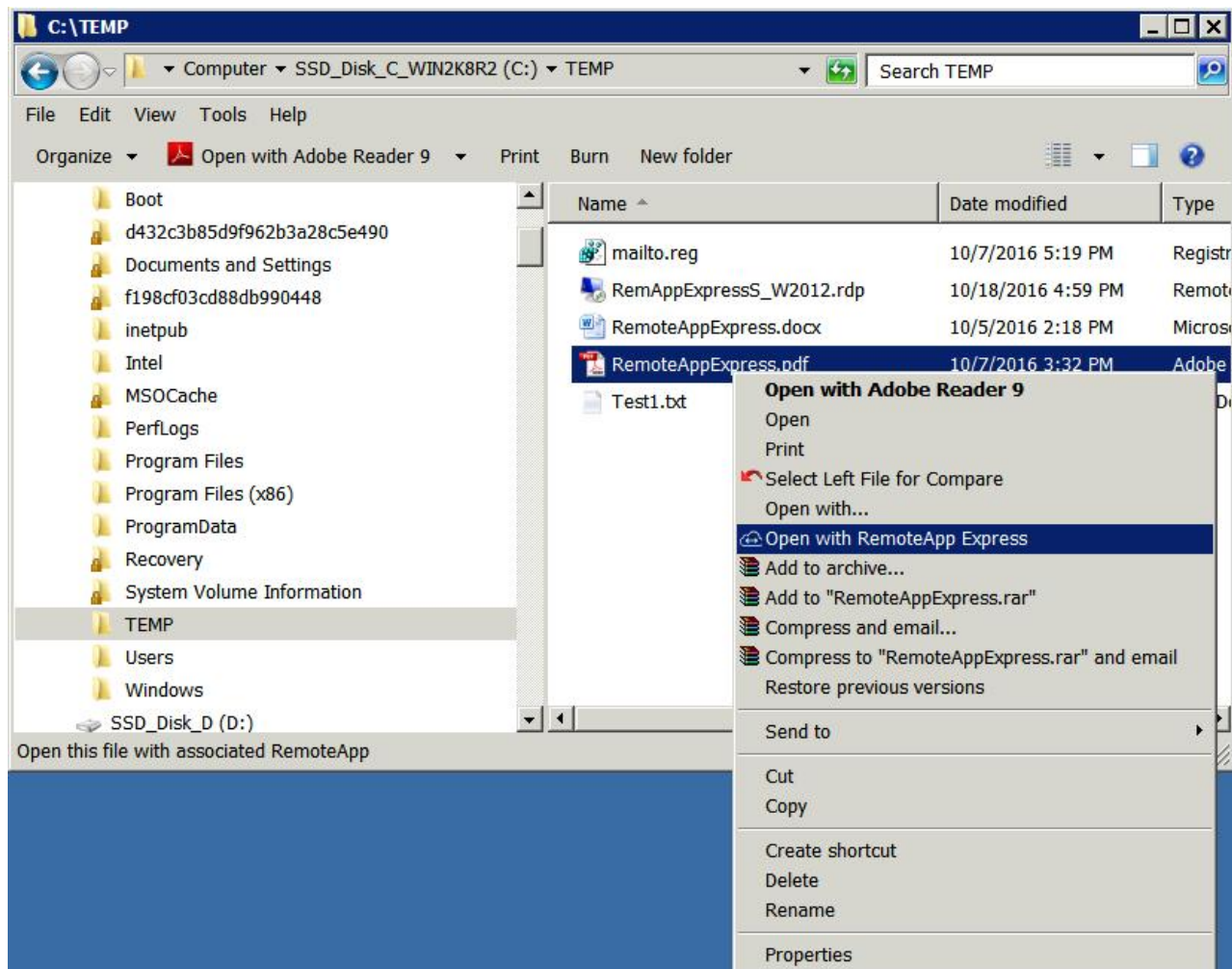
---

Execute the installation file **RemoteAppExpress\_x86.msi** or **RemoteAppExpress\_x64.msi** depending on the Windows version on the client (local) machine.

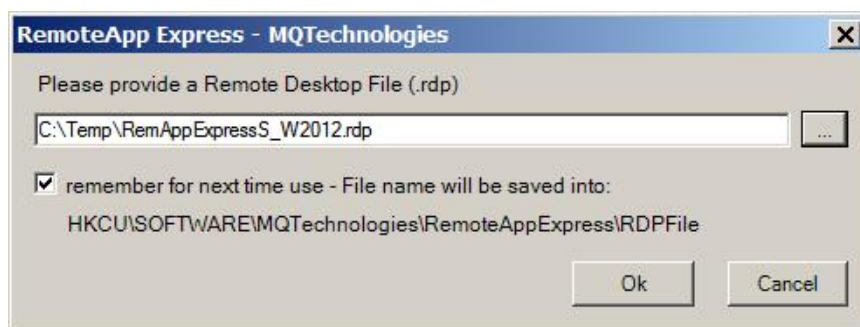
## III - USING

---

The most usually way to use this program is from the **Windows Explorer** context menu, right click on a document file and select "Open with **RemoteApp Express**":



The very first time, if there is no RDP file previously selected, the file browsing form will be displayed for user to select the RDP file.



The Ok button will be enabled only if the file exists. Once confirmed, RemoteAppExpress.exe will use that file to connect to the RDSH server. The file name may be saved to registry for future use. The default registry location is HKLM. To change this value to HKCU, open the RemoteAppExpress.exe.config and change the setting to:

```
<add key="RegistryLocation" value="HKCU" />
```

This program can be also used as a command line from the local (client) machine. The command line syntax is:

## RemoteAppExpress.exe DocumentFile RemoteApp.rdp

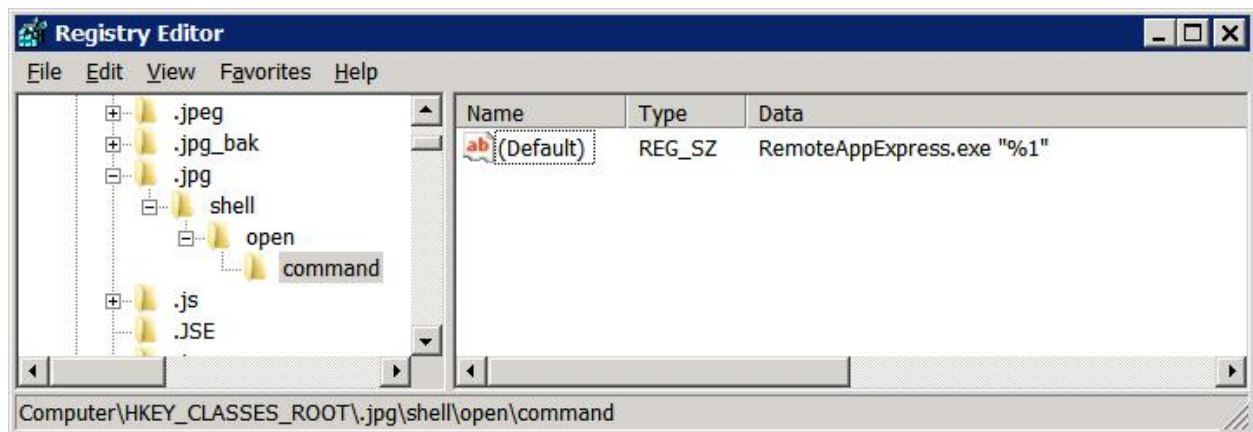
Where:

**DocumentFile:** any document file on the local side. e.g: "c:\my documents\WordFile.docx"

**RemoteApp.rdp:** this is the RDP file that connects to RemoteAppExpressS.exe RemoteApp published on the server. This parameter is optional, if it's omitted, the program will prompt for browsing this file.

For security reason, no executable file types will be allowed to launch.

If you want to enable Double click on a document file type to open with RemoteAppExpressS.exe RemoteApp program on the server, you can create a file association in the registry. For example, to associate JPG file type, create the Shell registry key:



The command line can contain a specific RDP file like:

**RemoteAppExpress.exe "%1" "c:\RemoteApp\RemoteAppExpressS.rdp"**

For other file type, Google for File Type Associations for more information

### Version 1.6

By default, file name will be converted by using drive mapping standard, e.g:

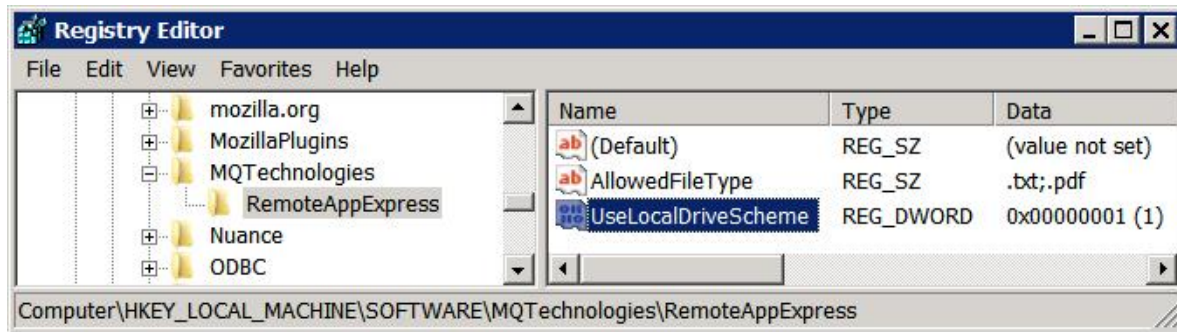
c:\temp\myWordDoc.docx will be converted to \\tsclient\c\temp\myWordDoc.docx on the server side.

In some situation, if a network drive is mapped on both client and server sides, the file name conversion can be disabled by setting the registry key on the server:

**HKLM\SOFTWARE\MQTechnologies\RemoteAppExpress\UseDriveMappingScheme**

**UseDriveMappingScheme = 1 (default):** all file names will be converted to \\tsclient\ naming standard

**UseDriveMappingScheme = 0 :** file on network drive (ex: z:\ DocumentABC.docx) will not be converted. It will be opened directly on the server as z:\ DocumentABC.docx. File on fixed drives will always be converted to \\tsclient\ naming standard.



**Release notes:**

- 2019-01-19: version 1.6
- 2017-05-31: version 1.5
- 2016-10-05: version 1.0

---

Please contact [contact@mqtechnologies.com](mailto:contact@mqtechnologies.com) for any question