

REMOTE FILETRANSFER
For Citrix & Remote Desktop Services
Version 3.7.1

Copyright by MQ Technologies.
contact@mqtechnologies.com

The freeware version of this program may be used, distributed free of charge by anyone.

By using this program you agree to indemnify the author from any liability that might arise from its use.

Table of Contents

I.	INTRODUCTION	3
II.	INSTALLATION	3
	1 - SERVER-SIDE:	3
	2 - CLIENT-SIDE:	3
III.	USING	4
IV.	CONTENT REDIRECTION.....	5

I. INTRODUCTION

Remote File Transfer for Citrix and Remote Desktop Services is a small utility program that permits, through the virtual channel, to transfer document file from the remote server (RDS or Citrix) to the client (local) machine. The file then can be **opened** with the default associated program or **printed** on the default printer installed on the client machine or **attached** to a new Outlook email.

This program can also be configured to provide host-to-client Content Redirection feature like with Citrix XenApp for any type of file.

II. INSTALLATION

The freeware version works only with 32-bit Windows on the client side.

1 - SERVER-SIDE (Server folder)

Requirement:

Make sure that on the server these 2 VC++ runtime packages exist before installing this program:

- 1- Microsoft Visual C++ 2008 Redistributable Package (x86)
- 2- Microsoft Visual C++ 2008 Redistributable Package (x64)

If not you can download them from Microsoft website. Usually, on Windows 2012R2 these 2 VC++ runtime packages are already installed by Windows

Execute the installation file RemFileTransferServer.msi, this will put the RemFileTransfer.exe to Windows folder (or you can choose any target folder in the PATH, that way allows the program can be launched without the path).

For Citrix server, the free version of Remote File Transfer works only with Windows 2008R2 and previous versions

2 - CLIENT-SIDE (Client folder)

a) For Remote Desktop Services (Terminal Server):

Execute the installation file TSRemFileTransferClient_x86.msi, on the client machine.

**The freeware version works only with a 32-bit Windows on the client side.
64-bit version is available only in the commercial version of Remote File Transfer.**

If you like to try the 64-bit version, please contact: contact@mqtechnologies.com to request a 64-bit demo version (TSRemFileTransferClient_x64.msi)

b) For Citrix:

Execute the installation file CTXRemFileTransferClient.msi, on the client (local) machine.

III. USING

Open a new Remote Desktop Connection session now, on the Terminal Server, run the command from a DOS prompt:

```
RemFileTransfer.exe "c:\my documents\MyWordFile.doc"
```

The file *c:\my documents\MyWordFile.doc* on the server will be copied to %TEMP% folder on local machine and opened with the default associated program.

The complete syntax option of Remote File Transfer is:

```
RemFileTransfer.exe /S:SourceFileOnServer /D:DestinationFolder /O:Operation
```

Where:

SourceFileOnServer: The full path file name on the server to copy to client side

DestinationFolder: Optional - a folder on the client machine where the file will be copied to. If **DestinationFolder** is omitted, the file will be transferred to %TEMP% folder on the local machine.

Operation: Optional – can be one of these values:

T: Transfer file only, do not open.

O: Open the file with the default associated program after transferring. This is the default option if the parameter is omitted.

P: Print the document file on default printer attached to local machine

M: Attach file to a new Outlook email on the local machine
(like Send To Mail Recipient context menu)

Ex: from a DOS Command line type:

```
RemFileTransfer.exe /S:C:\Temp\PictureTest.jpg /D:C:\Temp\ /O:O
```

The file *C:\Temp\PictureTest.jpg* on Terminal Server will be copied to *C:\Temp* on the client (local) machine. The file will be opened in default Image Viewer on the local machine.

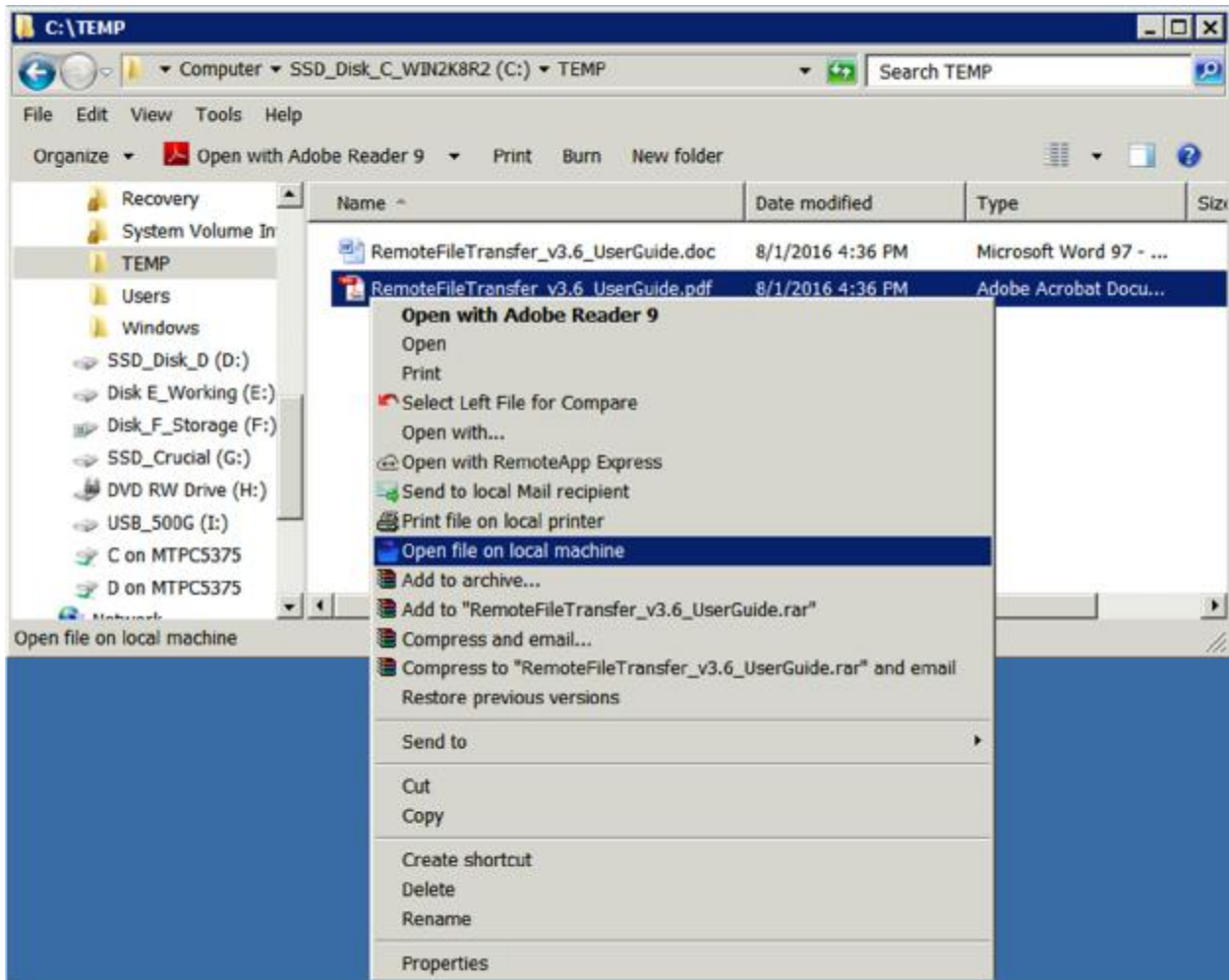
DestinationFolder can be an environment variable on the client machine, but it must be used with ^ escape character, i.e:

```
RemFileTransfer.exe /S:C:\PictureTest.jpg /D: ^%USERPROFILE^%\Temp\ /O:O
```

Except O(pen), options T(ansfer), P(rint) and M(ail), multiple files can be used. File name must be separated by a semi colon:

```
RemFileTransfer.exe /S:C:\File1.doc;C:\File2.doc /O:M
```

On the server, there are three commands added to Windows Explorer context menu. When right click on a file, user will have option to Send the file to attach to local Outlook email (Send to local Mail recipient) or to Print the file on default printer installed on local machine or Open file on local machine



IV. CONTENT REDIRECTION

If you want to configure RemFileTransfer.exe for using as Server-to-Client redirection for some file types (as with Citrix), Ex: for .jpg JPEG picture file type, follow these steps:

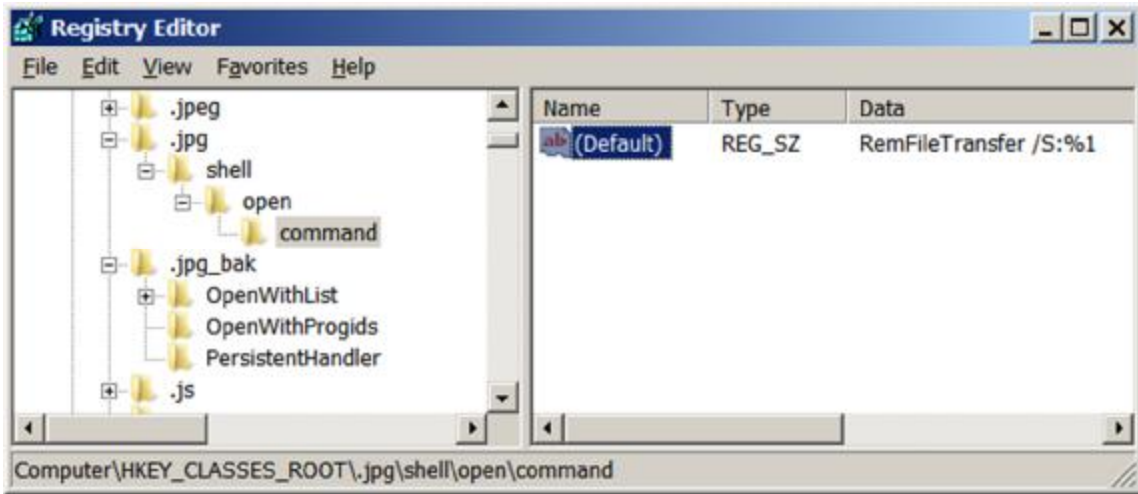
- Use Regedit.exe to edit the registry.

WARNING: IF YOU ARE NOT SURE ABOUT THIS, DON'T DO IT.

- 1- Find HKEY_CLASSES_ROOT\.jpg and rename it to HKEY_CLASSES_ROOT\.jpg_bak
- 2- Recreate the key HKEY_CLASSES_ROOT\.jpg
- 3- Add the new keys HKEY_CLASSES_ROOT\.jpg\shell\open\command
- 4- Edit the default value, change it to:
RemFileTransfer "%1"

If you want to specify a destination folder on the local machine:
RemFileTransfer /S:%1 /D:FolderOnLocal

In the registry, if using Environment Variable, use double ^ escape character:
RemFileTransfer /S:%1 /D:^%USERPROFILE^%



From now, during a remote session (RDP) every time when you double click on a JPEG picture file, it will be transferred to and opened on the client machine using the default associated program on the client side.

With this configuration, inside Outlook, when you double click on a Jpeg attached file, that file will be transferred and opened on the client machine as well.

* For .docx extension:

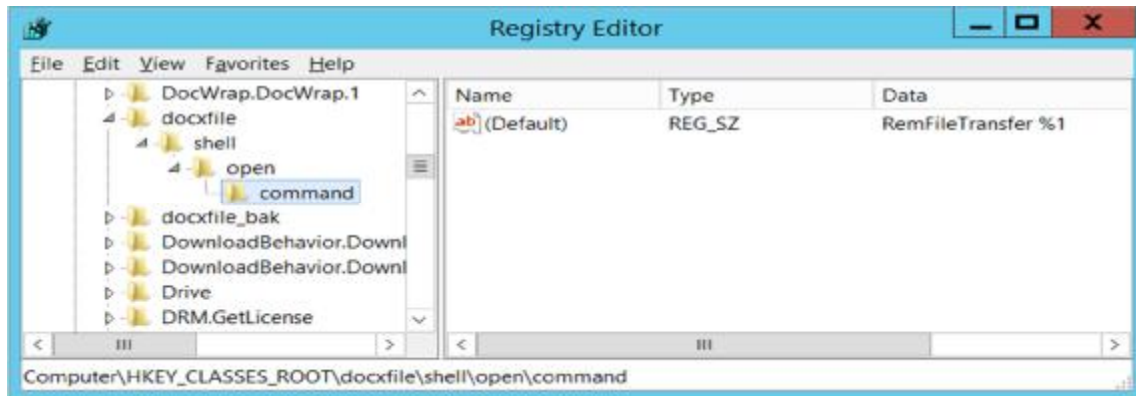
There are 2 places to modify in the server registry:
HKEY_CLASS_ROOT\.docx and HKEY_CLASS_ROOT\.docxfile

Rename (don't edit) them to: HKEY_CLASS_ROOT\.docx_bak and HKEY_CLASS_ROOT\.docxfile_bak

Then recreate the same registry keys:

HKEY_CLASS_ROOT\.docx\shell\open\command and

HKEY_CLASS_ROOT\.docxfile\shell\open\command and set Default value to: RemFileTransfer.exe "%1"



*** For .xlsx extension:**

Modify or create HKEY_CLASS_ROOT\.xlsx\shell\open\command

Default=RemFileTransfer.exe "%1"

Important notes:

1. By default, executable files cannot be transferred and opened (executed).
2. In this version, only Outlook is supported for file attachment.
3. For big files, the transfer time may be very long, depending on your connection speed. **For best performance, enable drive mapping feature.**
4. **Remote File Transfer** may or may not work properly in some specific use cases and depending on Remote Desktop Connection version and the combination of Windows version on both client and server machines.
5. This program cannot work if using as command line under a published DOS window because there are some security restrictions on the server. Only a DOS prompt window from a published full desktop can run **Remote File Transfer**. However, any published Remote App program can call (execute) **Remote File Transfer**.

TROUBLESHOOTING

Please contact contact@mqtechnologies.com for any question

When contacting us for troubleshooting, please provide all the details as many as possible such as Windows version on the Server and Local machine; full desktop mode or with a published RemoteApp and how you are using the program (command line or function call from another program or via registry modification, etc).

Release notes:

- 2017-03-24: v3.7.1 : Only file name is required for parameter with **Open** as the default option

Updated on April 24th, 2017