

RemoteApp Express
For Remote Desktop Services
Version 1.0.0

Copyright by MQTechnologies.
contact@mqtechnologies.com

This program is freeware and can be used by everyone.

A commercial version without freeware notice is also available. Please contact us by email for more detail.

This program is provided "AS-IS", without any kind of warranty. MQTechnologies does not guarantee that the program will operate correctly, neither uninterrupted nor error-free in combination with other programs, which user may select for use. MQTechnologies disclaims all responsibilities or all liabilities, whether they are implicit or explicit, that might arise from using of this program.

By using this program you agree to indemnify the author from any liability that might arise from its use.

Table of Contents

I - INTRODUCTION.....	3
II - INSTALLATION.....	3
1 - SERVER-SIDE: (Server folder)	3
2 - CLIENT-SIDE: (Client folder).....	3
III - USING	3

I - INTRODUCTION

RemoteApp Express is a complementary utility program for **Remote Desktop Services**. This program provides the ability, on the local machine, a quicker way to open any document file (Word, Excel, PDF, etc) with the default associated program on the RDSH server (Terminal Server) via a generic published **RemoteApp**.

II - INSTALLATION

This program works only for **Remote Desktop Services**. You must be familiar with setting up and publishing **RemoteApp** procedures.

Requirement: drive mapping must be enabled. File on local machine must be accessible following the standard mapped name. e.g.:

"c:\my documents\myfile.docx" on the local machine becomes
"\\tsclient\c\my documents\myfile.docx" on the server

1 - SERVER-SIDE: (Server folder)

Execute the installation file **RemoteAppExpressS.msi**, it will install a **RemoteAppExpressS.exe** program. You need to publish this program as **RemoteApp**. The RDP file of this published application need to distribute on the client machine.

After the installation, by default, this program allows only text (.txt) and PDF (.pdf) files to be opened on the server. More file types can be added by modifying this registry key on the server:

HKEY_LOCAL_MACHINE\SOFTWARE\MQTechnologies\RemoteAppExpress\AllowedFileType

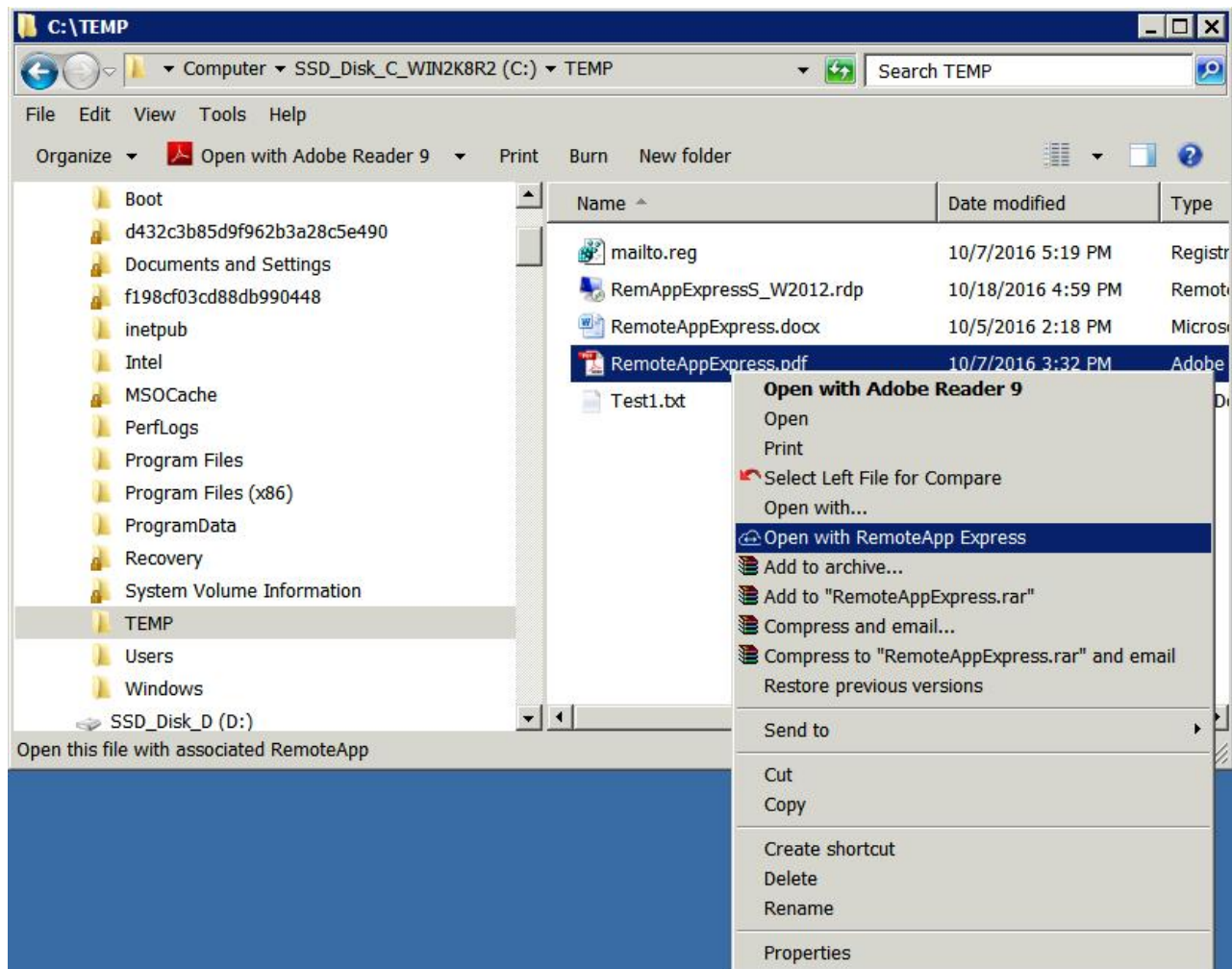
Add file extension to the allowed list, each extension must be preceded with a point and separated with a semi-colon (;). E.g.: ".txt;.pdf;.doc;.docx;.xls;.xlsx"

2 - CLIENT-SIDE: (Client folder)

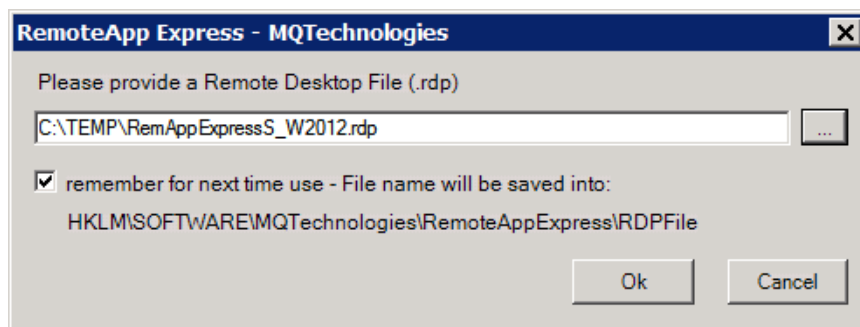
Execute the installation file **RemoteAppExpress_x86.msi** or **RemoteAppExpress_x64.msi** depending on the Windows version on the client (local) machine.

III - USING

The most usually way to use this program is from the **Windows Explorer** context menu, right click on a document file and select "**Open with RemoteApp Express**":



The very first time, if there is no RDP file previously selected, the file browsing form will be displayed for user to select the RDP file.



The Ok button will be enabled only if the file exists. Once confirmed, RemoteAppExpress.exe will use that file to connect to the RDS server . The file name may be saved to registry for future use.

This program can be also used as a command line from the local (client) machine. The command line syntax is:

RemoteAppExpress.exe DocumentFile RemoteApp.rdp

Where:

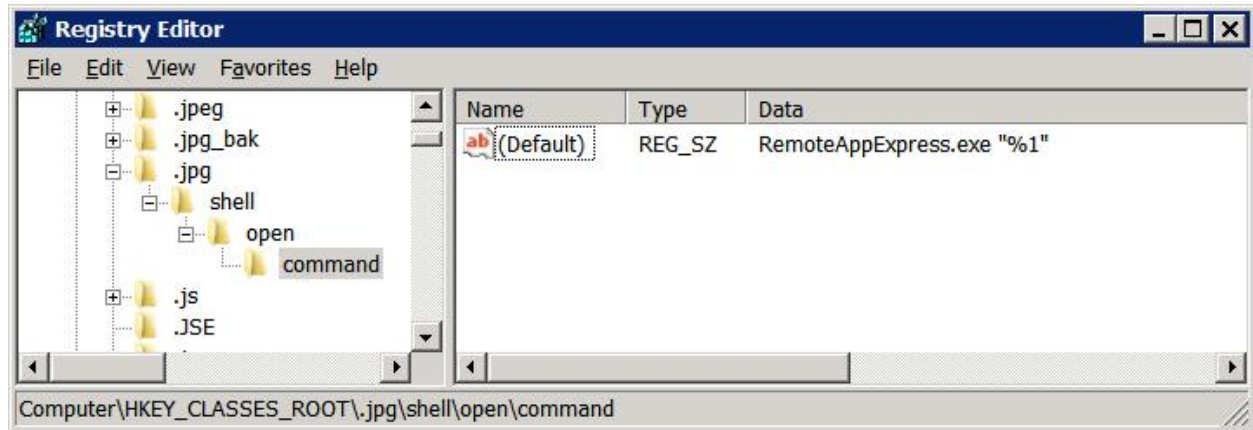
<http://www.mqtechnologies.com/>

DocumentFile: any document file on the local side. e.g: "c:\my documents\WordFile.docx"

RemoteApp.rdp: this is the RDP file that connects to RemoteAppExpressS.exe RemoteApp published on the server. This parameter is optional, if it's omitted, the program will prompt for browsing this file.

For security reason, no executable file types will be allowed to launch.

If you want to enable Double click on a document file type to open with RemoteAppExpressS.exe RemoteApp program on the server, you can create a file association in the registry. For example, to associate JPG file type, create the Shell registry key:



The command line can contains the RDP file like:

RemoteAppExpress.exe "%1" "c:\RemoteApp\RemoteAppExpressS.rdp"

For other file type, Google for File Type Associations for more information

Release notes:

- 2016-10-05: version 1.0

Please contact contact@mqtechnologies.com for any question